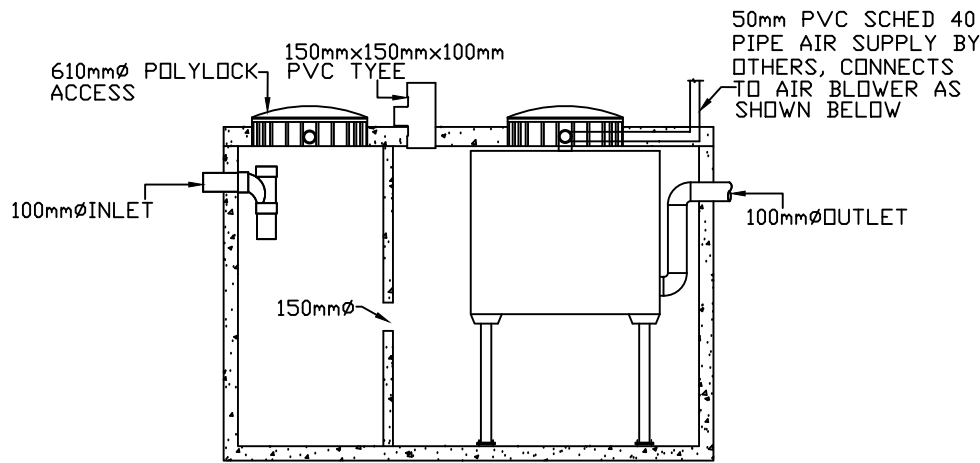
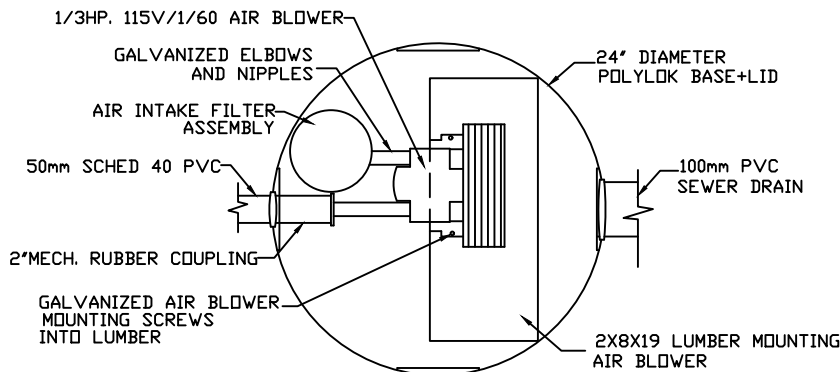


LID TOP VIEW

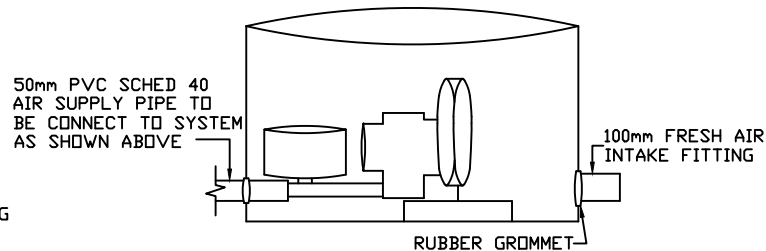


SIDE VIEW

AIR BLOWER INGROUND VAULT



TOP VIEW  
N.T.S



ELEVATION VIEW  
N.T.S

- NOVA WATER TECHNOLOGIES CORP.  
AGBR®1.9  
INSTALLED IN A PRECAST CONCRETE TANK  
GENERAL ARRANGEMENT SHOP DRAWINGS  
AGBR®1.9 IS DELIVERED FACTORY  
PRE-ASSEMBLED
1. CONCRETE TANK MANUFACTURE  
MODEL WITH 2 CHAMBERS.  
REFER TO TANK MANUFACTURER'S  
SPECIFICATIONS FOR TANK  
BURIAL AND INSTALLATION GUIDELINES.
  2. OPERATING CONDITION  
1893 LITERS (500 US gal(s) OR 416 imp gal(s)  
PER DAY DOMESTIC RESIDENTIAL SEWAGE.)
  3. INFLUENT  
BOD = 250mg/l,  
TSS = 250mg/l,  
FATS, OILS AND GREASES = 35mg/l
  4. EFFLUENT (capabilities)  
BOD = 10 mg/l,  
TSS = 10mg/l,  
TOTAL NITROGEN = 55% Reduction.
  5. VOLUMETRIC CAPACITY  
1<sup>st</sup> CHAMBER = 1500L.,  
2<sup>nd</sup> CHAMBER = 3033 L.  
(REFER TO TANK MANUFACTURER'S  
SPECIFICATIONS )
  6. DRY SHIPPING WEIGHT 4200kg.
  7. BURIAL DEPTH  
MAXIMUM EARTH COVER (No Clay) 610mm.
  8. FOR INSTALLATION, REFER TO CSA B66 BC  
SEWAGE SYSTEM STANDARD PRACTICES  
MANUAL (SPM) AND INSTALLATION  
GUIDELINES PUBLISHED BY NOVA WATER  
TECHNOLOGIES.
  9. DIMENSIONS IN MM.
  10. INLET AND OUTLET ACCEPT 100mm S/D
  11. EXTENSION FOR SERVICE ACCESS HATCHES  
AVAILABLE ON REQUEST.
  12. MAXIMUM EARTH COVER AS MEASURED  
FROM TOP OF TANK TOP CENTER LINE (NOT  
INCLUDING RISERS) IS 610mm.
  13. FOR HIGH WATER TABLE INSTALLATION  
CONTACT NOVA WATER TECHNOLOGIES  
PRIOR TO ORDERING.
  14. FOR VEHICLE TRAFFIC CONTACT NOVA  
WATER TECHNOLOGIES PRIOR TO  
ORDERING.



Nova Water Technologies Corp. Location:  
Mailing Add: Suite 259  
505, 8840-210 Street  
Langley, BC, V1M 2Y2  
Ph: 604-340-3389  
Email:  
WebSite:

Project Title/Description  
AGBR®1.9

Drawn By: CIS

Scale: 1:40

Date: June 12, 2017

Drawing No: NWT AGBR®1.9

Revision No: 0

Sheet No: 1 of 1